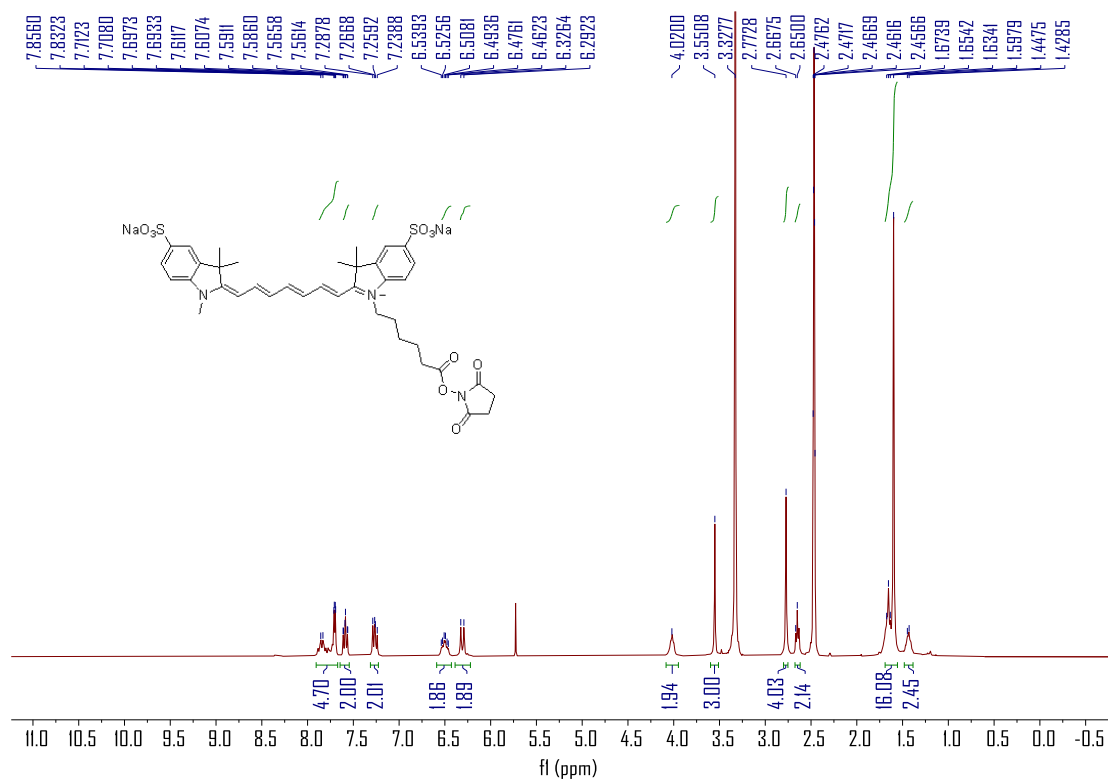
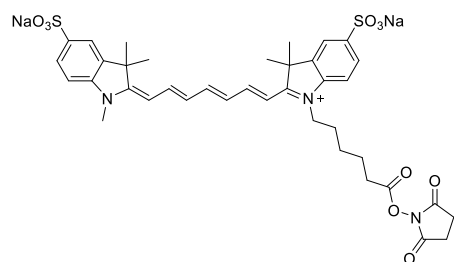


## 1. <sup>1</sup>H NMR



## 2. MS

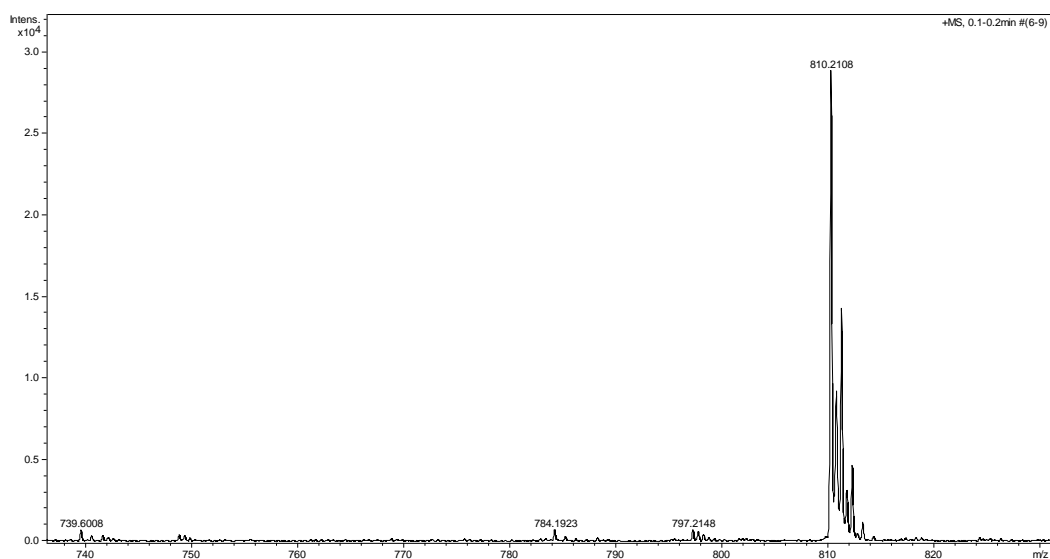


Chemical Formula: C<sub>38</sub>H<sub>42</sub>N<sub>3</sub>Na<sub>2</sub>O<sub>10</sub>S<sub>2</sub><sup>+</sup>

Exact Mass: 810.2102

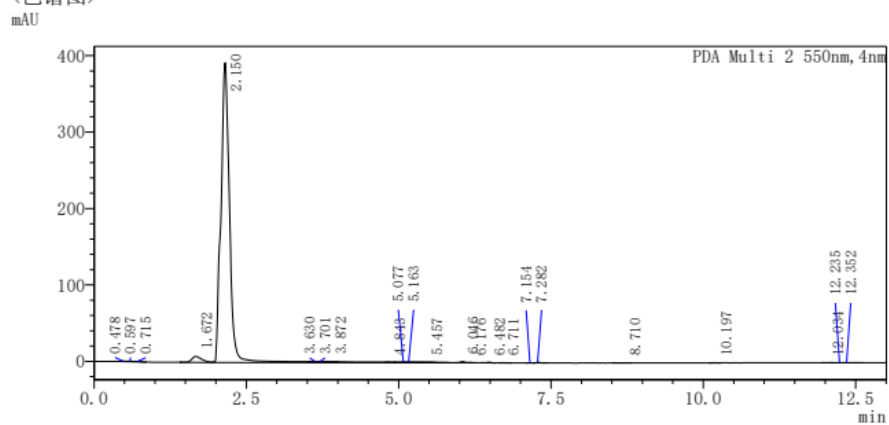
Molecular Weight: 810.8640

M<sup>+</sup>: calculated 810.2102, found 810.2108.



### 3. HPLC

<色谱图>



<峰表>

PDA Ch2 550nm					
峰号	保留时间	面积	标记	化合物名	面积%
1	0.478	3114			0.077
2	0.597	4794	V		0.119
3	0.715	3381	V		0.084
4	1.672	87950	V		2.188
5	2.150	3870619	SV		96.297
6	3.630	1755	TV		0.044
7	3.701	1674	TV		0.042
8	3.872	1792	TV		0.045
9	4.843	1028	TV		0.026
10	5.077	2599	TV		0.065
11	5.163	7032	TV		0.175
12	5.457	7137	TV		0.178
13	6.046	7088			0.176
14	6.176	1799	V		0.045
15	6.482	4293			0.107
16	6.711	1030	V		0.026
17	7.154	1252			0.031
18	7.282	5010	V		0.125
19	8.710	1001	V		0.025
20	10.197	1052	V		0.026
21	12.034	1014	V		0.025
22	12.235	1313	V		0.033